

How many people's blood is in the volume of 1600 stadia 'up to horses bridles' assuming the historic stadion of Laodicea?

Humanity's 2 options:

Min
 1600 Stadia volume m³ x
 185m x 30m x 1.2m =
 ~10 billion liter blood
 / max ~5L / person =
>2 Billion Deaths

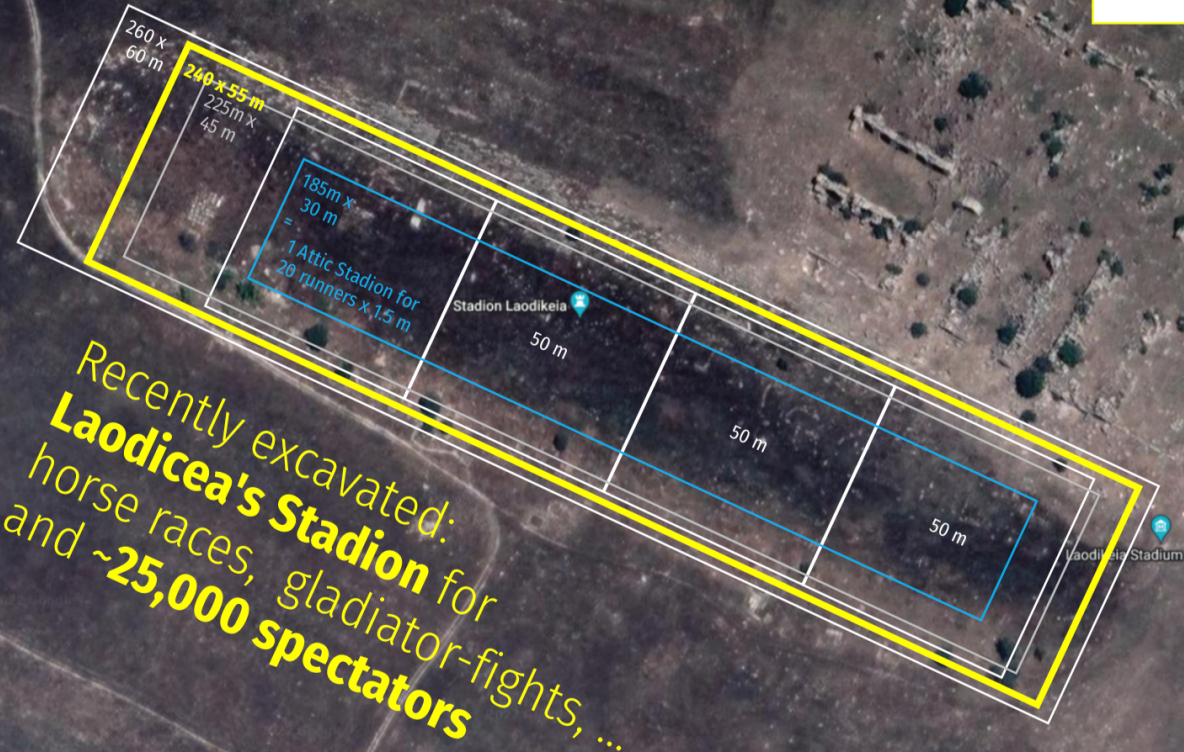
Mid
 1600 Stadia volume m³ x
 240m x 55m x 1.5m =
 ~32 billion liter
 / mid ~4L / person =
~8 Billion Deaths

Mid alt
 1600 Stadia volume m³ x
 225m x 45m x 1.75m =
 ~28 billion liter
 / mid ~3.5L / person =
~8 Billion Deaths

Max
 1600 Stadia volume m³
 x 260m x 60m x 1.8m =
 ~45 billion liter
 / min ~3.5L / person = ca
<12 Billion Deaths

... blood up to horses' bridles from 1600 stadia.
 Rev.14:20

0. Literal or 1. Symbolic?



Recently excavated: **Laodicea's Stadion** for horse races, gladiator-fights, ... and **~25,000 spectators**

MAD is on Death 0.

1. MAD -/- SON Life

Is it a stunning biouncertainty estimate of the **End of Humanity 0.**

... Or ...

1. an **Invitation to Slaughter Idols** instead of each other in wid-e research stadia?

Even 'literalist' commentaries tend to **0.** 'soften the blow' by claiming 'prophetic hyperbole', imagining a ~300 km long trail or _flow of blood. They overlook Laodicea\LAO.

Realizing Rev.14:20 was written to LAO with the largest blood-sport horse-race stadion in Asia minor, Loewe used its measures to estimate blood-volumes.

Results show: Rev.14:20 calls for a clear choice! Unless a clear symbolic-scientific interpretation is found to avert the disasters science predicts, H. sapiens is dead. Loewe found a clear way out.